

Binaree® Tissue Clearing Rapid™

The rapid tissue clearing for the large volume sample

BINAREE
make visible

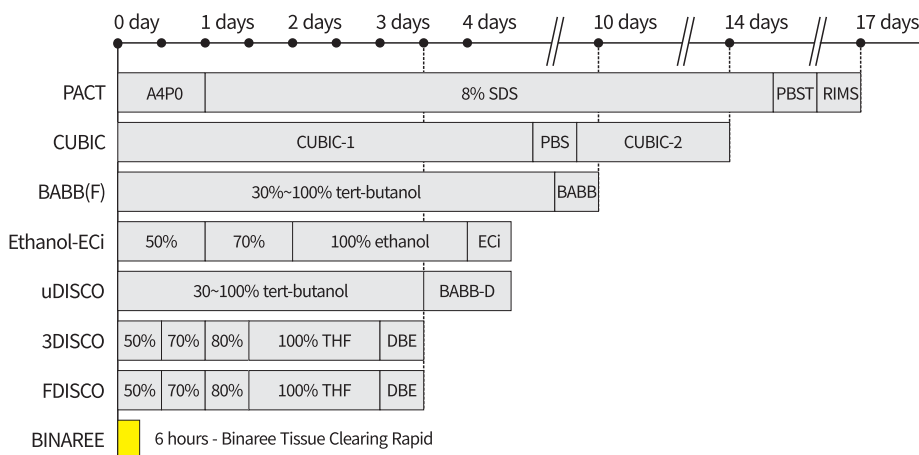


rapid!

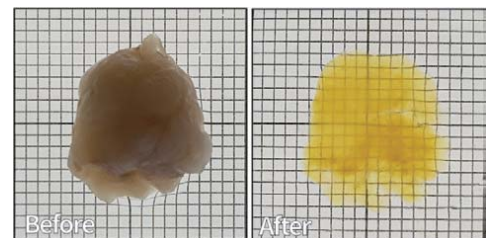
Tissue Clearing for Cancer.
Finish a whole mouse brain
tissue clearing in 6 hours.

Compare the tissue clearing time

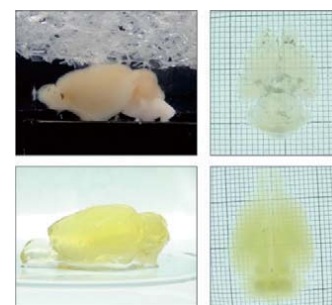
(a whole mouse brain)



Cleared samples



Mouse Lung Cancer (TC1)
5mm thickness, 48 hours



Mouse
whole brain:
6 hours

Rat
whole brain:
48 hours



Try to use the **Binaree Tissue Clearing Rapid System for free**
<https://binaree.com/demokit>



Rapid clearing

- Zebrafish brain 1 hour
- Mouse brain 6 hours
- Rat brain 48 hours



Automatic control

- Tissue clearing adaptive programmed power supply
- Simple panel for process



Adaptive for large sample

- The porous support is structured to cope with the change in size during clearing.



Protect your markers

- Automatic temperature control
- Non-organic solvent-based tissue clearing technology

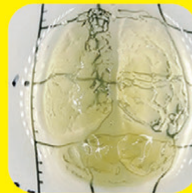
3D analysis for the deep tissue sample without slide section



Deep tissue sample



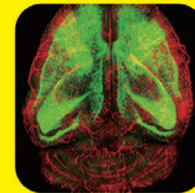
Tissue Clearing Rapid



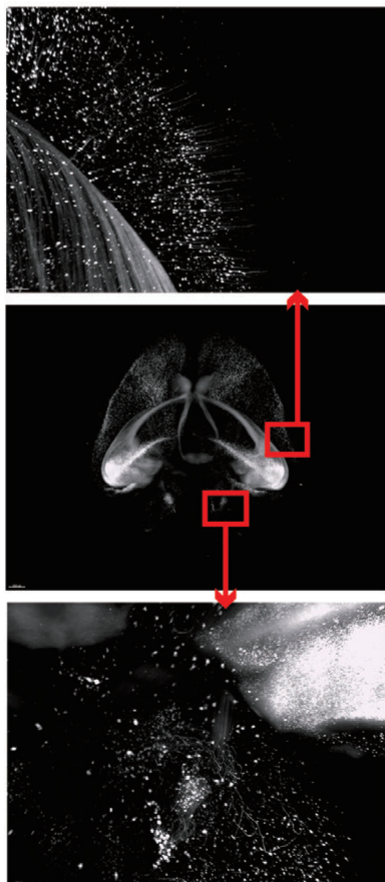
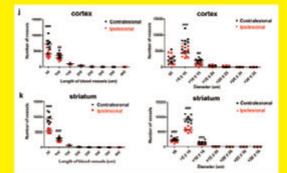
Cleared sample



Imaging



3D deconvolution



The cleared Thy-1 mouse whole brain cleared image by the 3i Light Sheet Microscope

Binaree® Tissue Clearing Rapid™ Solution

Cat. No.	BRTC-001	BRTC-002
Components	Binaree Tissue Clearing Rapid Solution Brain 60 ml	Binaree Tissue Clearing Rapid Solution 60 ml non-brain tissue
Optimized for	brain	

Binaree® Tissue Clearing Rapid™ Mounting Solution

Cat. No.	BRMO-006
Components	Binaree Tissue Clearing Rapid Mounting Solution 60 ml

Binaree® Tissue Clearing Rapid™ System

Cat. No.	BDTC-003
Display	Full Digital LCD Display with Back-Light Function
Controller	Digital Fuzzy Controller with Touch Button & Jog Dial
Timer	99hr 59min., ±1min. increments.
Heating Feature	Included. (Automatic Controlled)
Permissible Temp.	5 °C~40 °C, Humidity <80%
Power Requirements	1 Phase, AC 120 60 Hz or AC 230V 50/60 Hz, 300W
Safety Feature	Over Temp/Current Protection, Sensor Error Detector
Dimensions (WxHxD)	165 x 250 x 145 mm, Net weight 2.2 kg
Package size (WxHxD)	230 x 310 x 260 mm, Gross weight 3.0 kg
Note	Use only with the Binaree Tissue Clearing Rapid

* The System design & specification can be changed without notice.

Binaree® Tissue Clearing Rapid™ Chamber A/B (replacement part of System)

Cat. No.	BDTC-003-CA	/	BDTC-003-CB
Solution volume	20 ml (Maximum 30 ml)	/	50 ml (Maximum 70 ml)

* The Chamber design & specification can be changed without notice.

Sales and Service Contacts

For Further contacts, visit **binaree.com**

Binaree, Inc. E-mail: sales@binaree.com Phone: +82-(0)53-939-5012
 47 Gyeongdaero17-gil Buk-gu, STE#608 IT Conv. Bldg.(115),
 Daegu, 41566, Republic of Korea