

Binaree® Tissue Clearing Rapid™

The rapid tissue clearing for the large volume sample

BINAREE
make visible

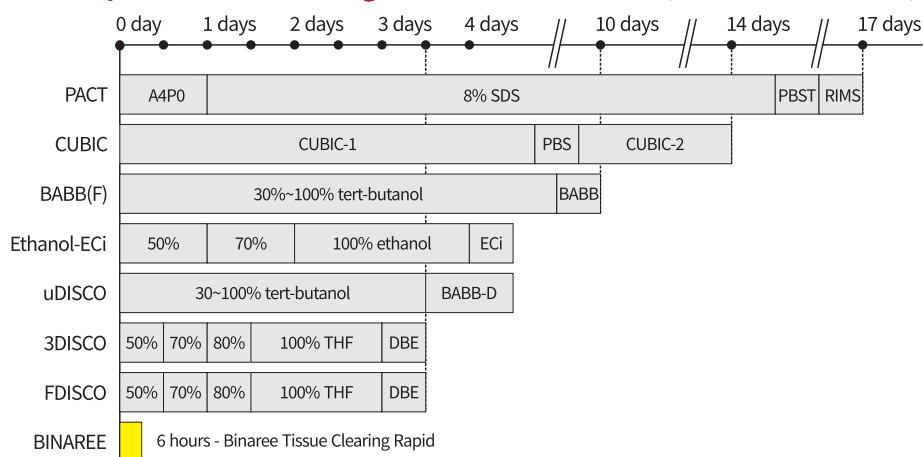


rapid!

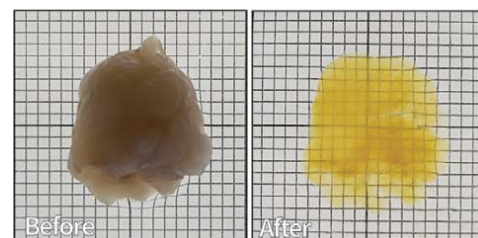
Tissue Clearing for Cancer.
Finish a whole mouse brain
tissue clearing in 6 hours.

Compare the tissue clearing time

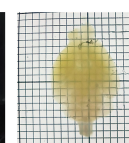
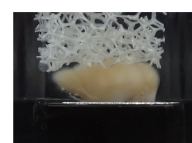
(a whole mouse brain)



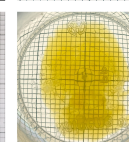
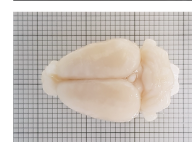
Cleared samples



Mouse Lung Cancer
5mm thickness, 48 hours



Mouse
whole brain:
6 hours



Rat
whole brain:
48 hours



Try to use the **Binaree Tissue Clearing Rapid System for free**
<https://binaree.com/demokit>



Rapid clearing

- Zebrafish brain 1 hour
- Mouse brain 6 hours
- Rat brain 48 hours



Automatic control

- Tissue clearing adaptive programmed power supply
- Simple panel for process



Adaptive for large sample

- The porous support is structured to cope with the change in size during clearing.



Protect your markers

- Automatic temperature control
- Non-organic solvent-based tissue clearing technology

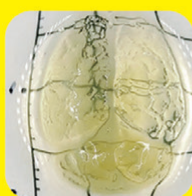
3D analysis for the deep tissue sample without slide section



Deep tissue sample



Tissue Clearing Rapid



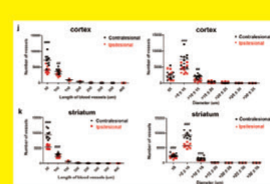
Cleared sample



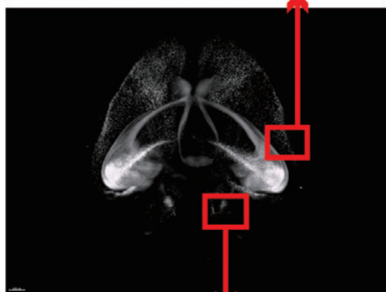
Imaging



3D deconvolution



Quantitative analysis with location information



The cleared Thy-1 mouse whole brain cleared image by the 3i Light Sheet Microscope

Binaree® Tissue Clearing Rapid™ Solution

Cat. No.	BRTC-001	BRTC-002
Components	Binaree Tissue Clearing Rapid Solution Brain 60 ml	Binaree Tissue Clearing Rapid Solution 60 ml non-brain tissue
Optimized for	brain	

Binaree® Tissue Clearing Mounting Solution

Cat. No.	HRMO-006	BRMO-006
Components	60 ml / RI: 1.46	60 ml / RI: 1.52

Binaree® Tissue Clearing Rapid™ System

Cat. No.	BDTC-003
Display	Full Digital LCD Display with Back-Light Function
Controller	Digital Fuzzy Controller with Touch Button & Jog Dial
Timer	999hr ± 1 hr. increments.
Heating Feature	Included. (Automatic Controlled)
Permissible Temp.	5 °C~40 °C, Humidity <80%
Power Requirements	1 Phase, AC 120 60 Hz or AC 230V 50/60 Hz, 300W
Safety Feature	Over Temp/Current Protection, Sensor Error Detector
Dimensions (WxHxD)	165 x 250 x 145 mm, Net weight 2.2 kg
Package size (WxHxD)	230 x 310 x 260 mm, Gross weight 3.0 kg
Note	Use only with the Binaree Tissue Clearing Rapid

* The System design & specification can be changed without notice.

Binaree® Tissue Clearing Rapid™ Chamber A/B (replacement part of System)

Cat. No.	BDTC-003-CA	/	BDTC-003-CB
Solution volume	20 ml (Maximum 30 ml)	/	50 ml (Maximum 70 ml)

* The Chamber design & specification can be changed without notice.

Sales and Service Contacts

For Further contacts,
 visit **binaree.com**

Binaree, Inc. E-mail: sales@binaree.com Phone: +82-(0)53-939-5012
 47 Gyeongdaero17-gil Buk-gu, STE#608 IT Conv. Bldg.(115),
 Daegu, 41566, Republic of Korea