

# Binaree<sup>®</sup> Tissue Clearing<sup>™</sup> (Rapid)

The rapid tissue clearing system for the large volume sample



# rapid!



Finish a whole mouse brain **tissue clearing in 6 hours.**  
Available in **Spring 2023**



### Rapid clearing

- Zebrafish brain 1 hour
- Mouse brain 6 hours
- Rat brain 48 hours



### Automatic control

- Tissue clearing adaptive programed power supply
- Simple panel for process



### Adaptive for large sample

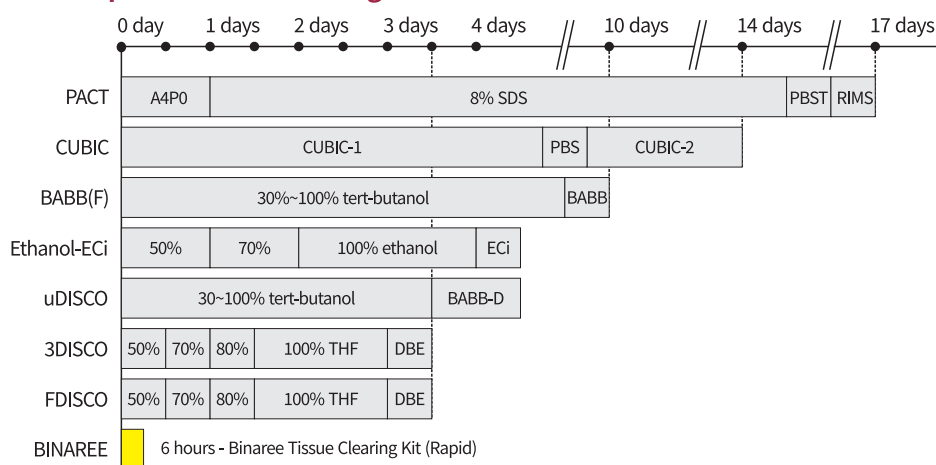
- The porous support is structured to cope with the change in size during clearing.



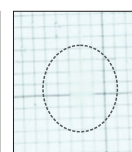
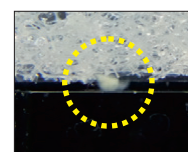
### Protect your markers

- Automatic temperature control
- Non-organic based Binaree Tissue Clearing Technology

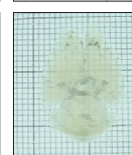
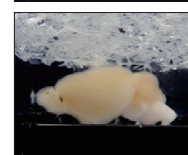
### Compare the tissue clearing time



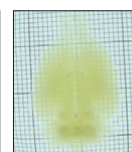
### Cleared samples



Zebrafish whole brain: 1 hours



Mouse whole brain: 6 hours



Rat whole brain: 48 hours

Try to use **the Binaree Tissue Clearing Rapid System for free** with the **pre-launch promotion** (Limited quantity, only subscribers apply) Sign-up now, choose the plan later: **binaree.com/rapid**



**Plan A. 4 weeks free trial**

Buy any 2 reagents, lease the system for 4 weeks free trial Binaree, Inc. delivery or collect the system by the courier.

**Plan B. Buy 8 kits & get the system free**

Buy any 8 reagents, get the system free. Binaree, Inc. delivery the system by the courier.

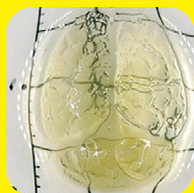
**3D analysis for the deep tissue sample without slide section**



Deep tissue sample



Tissue Clearing (Rapid)



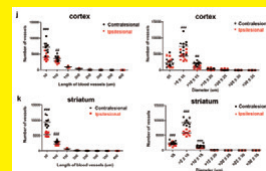
Cleared sample



Imaging



3D deconvolution



Quantitative analysis with location information

**Binaree® Tissue Clearing™ Kit (Rapid)**

Cat. No.	HRTC-003
Components	Tissue Clearing solution (Rapid) 90 ml
Note	Use only with Binaree Mounting & Storage solution (Rapid)

**Binaree® Mounting & Storage™ solution (Rapid)**

Cat. No.	HRMS-060
Volume	60 ml
Note	Use only with Binaree Tissue Clearing (Rapid) kit

**Binaree® Tissue Clearing Rapid™ System specification**

Cat. No.	BDTC-003
Temperature	24 °C ( Regulation band $\pm 1$ °C )
Heating feature	Within 20 minutes
Cooling feature	Within 20 minutes
Input volatage	110~240 V 50/60 Hz
Size	1,620 x 1,100 x 1,100 mm
Net weight	1.5 kg
Certification	CE

\* The System design & specification can be changed without notice

**Binaree® Tissue Clearing Rapid™ Chamber (a part of System) Specification**

Cat. No.	BDTC-003-CA
Size	400 x 400 x 450 mm
Solution volume	15 ml ( Maxium 30 ml )

\* The Chamber design & specification can be changed without notice



The System image is used for better understanding and may differ from the actual design when released.

**Sales and Service Contacts**

For Forther contacts, visit **binaree.com**

Binaree, Inc. E-mail: [sales@binaree.com](mailto:sales@binaree.com) Phone: +82-(0)53-939-5012  
47 Gyeongdaero17-gil Buk-gu, STE#608 IT Conv. Bldg.(115),  
Daegu, 41566, Republic of Korea